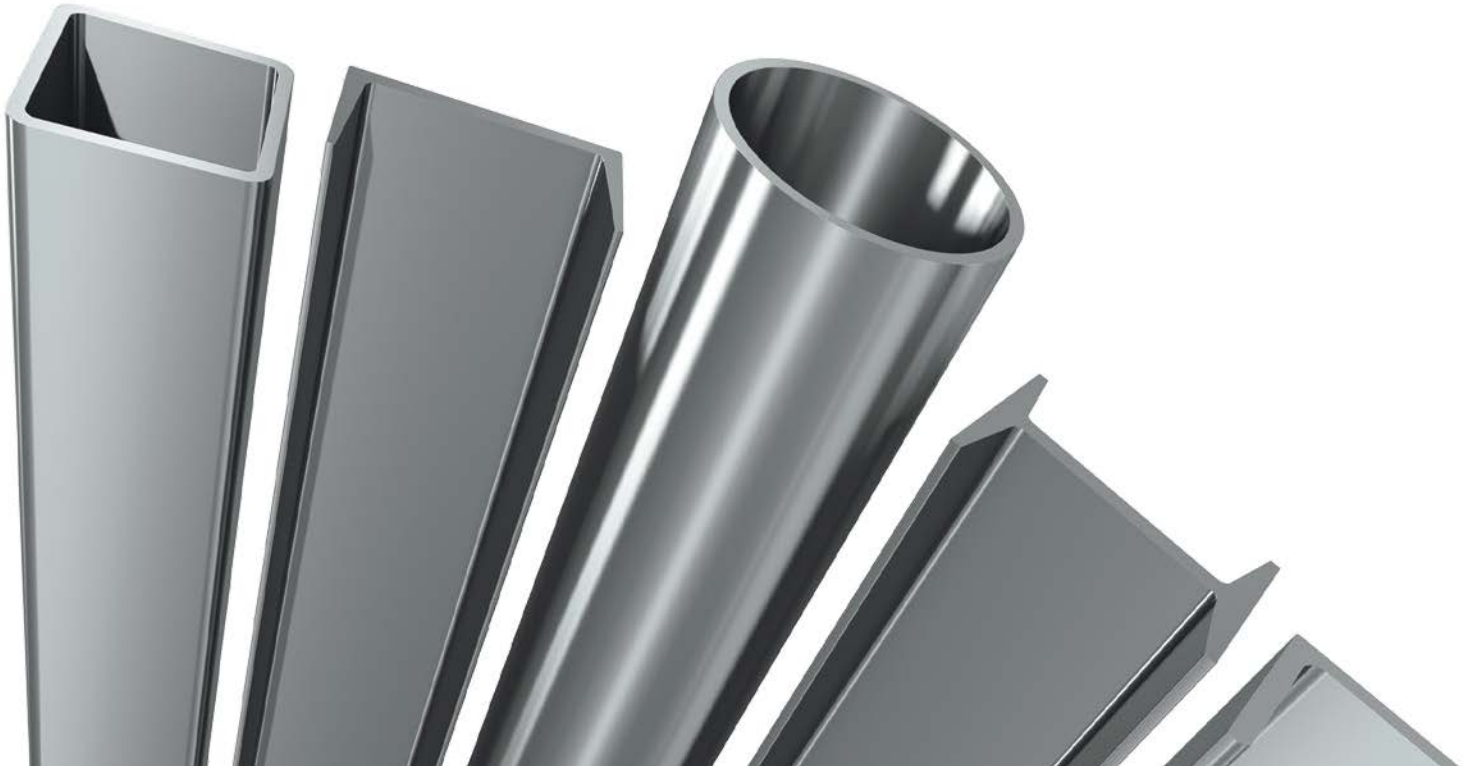


# WTEC Steel

Renewable Energy Innovation



# WTEC: Your Integrated Solar Solutions Provider



WTEC is a total solar steel solutions provider offering a complete package of quality materials, logistics, and expertise to meet all customer requests.

We have the solution to your project requirements, whether it be a complete solar farm project or a specific component of that project.

The WTEC model is based on three important components: quality control & engineering, procurement & production management, and logistics. Combined, these three factors ensure successful project completion and, ultimately, customer satisfaction.

The powerful advantages of high quality and low-cost solutions drive WTEC to the forefront of the solar PV industry. From design to production, implementation of the WTEC model delivers the value and capacity required to fulfill the demanding needs of today's market.

## Testimonials

"ABB was completely satisfied with WTEC's performance on delivery of piles for the Apex Nevada Project. WTEC have met their delivery commitment and they have delivered a quality product. We are pleased to recommend SunSteel as a supplier."

John W Koekkoek, Project Director,  
ABB, Apex Solar project



"We partnered with WTEC from day one as we knew that few players in the industry could meet the demanding schedule and quality standards required to successfully execute one of the largest PV solar fields in North America. WTEC stepped up to the plate and delivered in support of our 24 hour pile driving operation. As a result we were able to exceed our clients expectations, and quickly get ahead and stay ahead of the tracker installation. Over 27,000 piles of varying lengths, designed, procured, delivered, and installed in less than three months – an outstanding job, by an outstanding team! We look forward to our next partnering opportunity..."

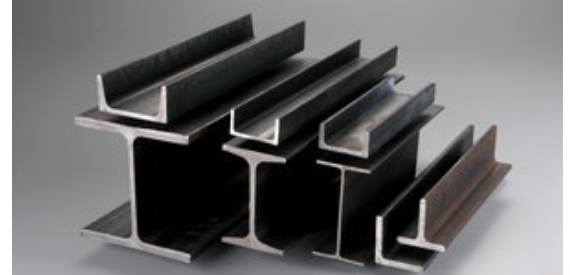
Mario P. Carbone, Vice President/COO, AUI Contractors, LLC, Weberville project

All our products are fabricated to any specification.

- **I-Beams and C-Channels**
- **Tubular and Square Pipes**
- **Helical Piers**

## I-Beams and C-Channels

An I-beam, also known as W-beam or Universal Beam, is a beam with an I- or H-shaped cross-section. In the United States, the most commonly mentioned I-beam is the wide-flange (W) shape. Steel I-beams are commonly specified using the depth and weight of the beam. Structural steel members, such as I-beams or C-Channels (I-shaped cross-section), have high second moments of area, which allow them to be very stiff in respect to their cross-sectional area. WTEC offers a wide variety of I-Beams and C-Channels fabricated to exacting specifications in our steel mills conveniently located near your work site. We offer engineering, manufacturing, installation, distribution and equipment design and creation for a variety of projects. Depending on the size, type and the condition of the project, a specific I-Beam and C-Channels will be selected and installed.



## Tubular and Square Pipes

A hollow structural section (HSS) is a type of metal profile with a hollow tubular cross section. Circular and square HSS have very efficient shapes for multiple-axis loading as they have uniform geometric and thus uniform strength characteristics along two or more cross-sectional axes; this makes them good choices for columns. They also have excellent resistance to torsion. HSS can also be used as beams, although wide flange or I-beam shapes are in many cases a more efficient structural shape for this application. However, the HSS has superior resistance to lateral torsional buckling.



## Helical Piers

Helical piers, also referred to as helical piles, screw piles, steel screw-in foundations, screw piers or screw anchors, are a steel screw-in piling and ground anchoring system used for building foundations. Screw piles are manufactured using varying sizes of tubular hollow sections for the pile or anchors shaft. Installed using various earthmoving equipment fitted with rotary hydraulic attachments, helical piers are wound into the ground much like a screw into wood.



# Turchi Track Models



Turchi USA LLC 4896199

## WTEC's Turchi Post Drivers

Products built with pride and sold with full support

### Turchi Post Driver Offers:

- **Installation time reduction  
200 or more posts per day!**
- **Compatibility with many beams and piers**
- **Higher precision during installation**
- **Less man-power for operation**
- **Cost-effectiveness**
- **Reliability**



MODEL			
	240	260	300
TOTAL WEIGHT KG	2,500	2,700	3,500
JOULES PER STRIKE & RATE PER MINUTE	720 / 1,100	830 / 900-1,100	830 / 540-1,300
HYDRAULICS FLOW RATE LT/MIN	50 / 70	60 / 80	60 / 80
WIDTH MM	1900	2000	2420
CLOSED HEIGHT MM	2620	2620	2420
OUT HEARD / ARM TRAVEL MM	720	720	920
FORWARD BACK HEAD TRAVEL	+ 130 – 130	+130 – 130	+130 – 130
INCLINATION	+10 – 50	+10 – 50	+10 – 50
LATERAL INCLINATION	+10 – 10	+10 – 10	+10 – 10
HAMMER STRIKE TRAVEL MM	2,160	2,160	2,160
STANDARD ENGINE CYLINDERS / KW / HP	3 / 27.1 / 36.8	4 / 35.4 / 48.1	4 / 51.1 / 69.5
HYDRAULIC OIL CAPACITY LT	120	120	120
FUEL TANK LT	60	60	60
STANDARD CONFIGURATION Oil cooled, electric start, engine speed indicator, accelerator lever, hour meter, fuel level indicator, stop hammer, approved sling hooks			

# Turchi Post Driver



Turchi USA LLC 4896199



## WTEC's State of the Art Turchi Post Driver

*Your competitive edge...*

### Model 300F for solar farm application

Track Drive Diesel powered post driver

#### Technical Characteristics

3,500 kg, Horse power 47.4 Hp / 35.4 kW,  
830 Joule hammer, 6 Meters / 19.6 Ft post length.

<b>Dimension</b>	2.100L x 2.350W x 2.670H
------------------	--------------------------

<b>Head Movement Hydraulically</b>	<ol style="list-style-type: none"> <li>1. Extend – retract</li> <li>2. Inclination N-S</li> <li>3. Inclination E-W</li> <li>4. Forward – reverse</li> <li>5. Hammer height</li> </ol>
------------------------------------	---

<b>Track Drive</b>	Hydraulic Steerable
Speed	1.92 – 3.33 km/h, 1.2 – 2.0 miles/hour 32 – 55 m/min, 104 – 182 ft/min

<b>Hydraulic System</b>	Proportional control, open circuit
Pump	Gear
Oil Tank	140 Litres, 23 Gal UK, 27 Gal U.S.
Oil Pressure	170 bar, 2456 PSI
Oil Flow	6-90 Lt/min, 1.3-19.7 UK/Gal Min, 1.58 – 23.7 US/Gal Min

<b>Hammer</b>	
Variable Strike Rate	540 – 1.300 S/Min
Energy	830 Joules
Weight	440 Kg

<b>Motor</b>	
	Yanmar 4TNV88, 4 Cylinder, 35 kW / 47.4 Hp at 3000 rpm, water cooled, dry air filter.

#### Accessories

Supplied Standard. 4 Point machine lifting chains

#### Optional

Post Extractor

4 Hole core bore rig, with individual hydraulic motors, adjustable positioning, including one in center

DTH hammer

Post hammer extension to plant full depth 6 meters / 19.6 Ft

Plain or Imprinted anvil to suit your special application

# Projects & Locations

## Production Arrays Serve the West Coast, Midwest and East Coast

WTEC's close partnerships provide quick access to railways for fast and efficient transport and trucking for flexible delivery to the job sites.

### WTEC's Production Facilities close proximity guarantees:

- Prompt delivery of materials to meet critical deadlines.
- Provision of top quality, low cost solutions....always!
- Meeting and often exceeding customer needs and quality expectations.

### Production Facilities



- Phoenix, Arizona
- Hurst, Texas

### Projects

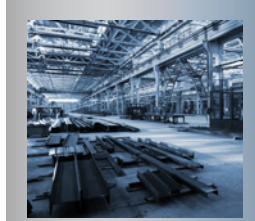
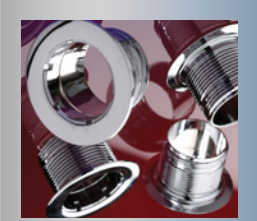


Alamo I OCI Solar Power 50MW	Topaz Solar First Solar 550MW
Somerset Sun Edison 10MW	Apex ABB 20MW
Arlington Valley Fluor 125MW	Macho Springs First Solar 55MW
Catalina Bethel 130MW	Webberville RES/FRV/ SunEdison 35MW
Mount Signal AES 266MW	CVSR Bechtel 275MW
Alpine Solar First Solar 66MW	Delsea Road OCI Solar Power 3.71MW
Centinela Fluor 170	Tucson OHL/ SunEdison 25MW



# Total Service Package

WTEC offers a complete package of quality materials, logistics, and expertise to meet all customer requests.



From design to production, implementation of the WTEC model delivers the value and capacity required to fulfill the demanding needs of today's market. WTEC's Total Service package includes all of the following:

## Steel Production

WTEC offers production of most industry standards to any specification:

- I-Beams
- C-Channels
- Tubular Pipes
- Square Pipes
- Helical Piers

We ensure fast turnaround and delivery to fabricator, competitive pricing under market price and savings for the customer.

## Fabrication

WTEC's Facilities can custom cut, punch & cope foundation posts to meet all customer requirements. No job is too complex for our skilled fabricators.

## Galvanization

WTEC provides quick and efficient galvanization of steel products through close partnerships and proximity of fabrication and galvanizing facilities. WTEC's Hot Dip Galvanization coating is capable of providing over 60 years of virtually maintenance free service!

## Shipment

WTEC provides fast and reliable shipping across the whole country depending on your needs.

## Installation

When WTEC shows up to do an installation you know it will be done safely, quickly, and precisely. A large part of that formula is the use of the state of the art Turchi Post Driver. We can help you install piers/beams using the Turchi machine or you can buy the machine from us.



**WTEC** Steel  
Renewable Energy Innovation

P: 201. 242. 9906

F: 201. 242. 9926

[sales@windnenergy.com](mailto:sales@windnenergy.com)

[www.windnenergy.com](http://www.windnenergy.com)

One Bridge Plaza N. Suite 260  
Fort Lee, NJ 07024